

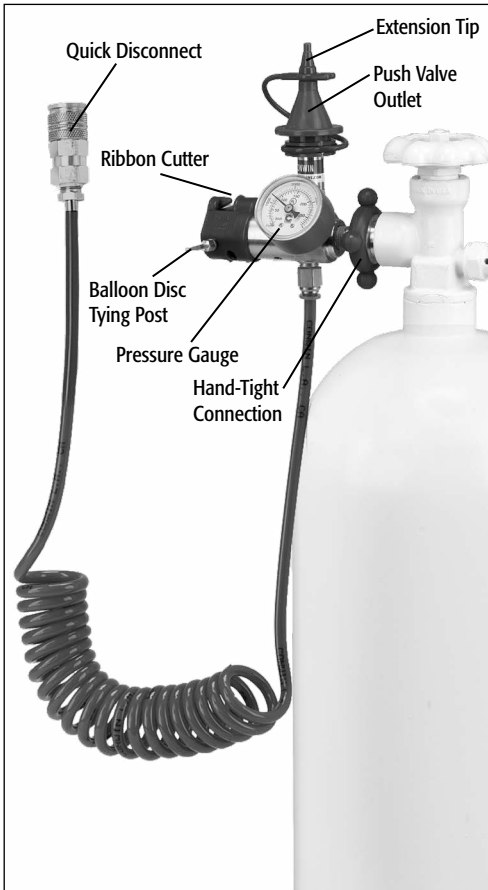


10ft. Extension Hose Inflator

Instruction Sheet

Includes:

- 1 10ft Ext. Hose Inflator with Quick Disconnect Socket
- 1 Extension Tip
- 1 Ribbon Cutter
- 1 Disc Tying Post



Getting Started

Inflator Hook-Up

1. Hand-tighten the primary regulator to a helium or nitrogen cylinder. (For Italian and Russian inflators use a wrench to tighten regulator.)
2. Slowly open the cylinder valve. Cylinder pressure locks the inflator in place leak-free.

Inflator Removal

1. Close cylinder valve firmly.
2. Release pressure by pushing down on the latex push valve.
3. Unscrew hand-tight connection and remove inflator from cylinder.



Interchangeable Outlets

(See Options Below)

Select the appropriate outlet for the job and snap-on. To remove the outlet, slide the brass sleeve on the quick disconnect fitting downward and the outlet is released.



Balloon Tying Discs

Increase productivity by attaching ribbon and tying the balloon into the same motion. The discs also prevent sore fingers and are for use with latex balloon up to 16 inches.



Interchangeable Snap-On Outlets (Sold Separately)

Select the appropriate outlet for the job and snap-on. To remove the outlet, slide the brass sleeve on the quick disconnect fitting downward and the outlet is released.

Helium/Air Outlet

The Helium/Air Outlet enables the user to inflate 14" and larger latex balloons and 36" foil balloons with a mixture of 60% helium and 40% air. Reduce your helium costs by up to 40%!

Item # 36530



Flex-Tilt Valve Outlet

The Flex-Tilt Valve Outlet offers maximum flow control and is ideal for manual inflation of foil balloons. The soft tapered tip works great on all size balloons. Good choice for use with Hi-Float®.

Item # 36510



Trigger Valve Outlet

The Trigger Valve Outlet enables the user to manually speed inflate foil balloons without damaging the foil valve. The long extension tin bypasses the internal balloon valve. Also works well with Conwin's Insider

Item # 36960



Auto Foil Outlet w/ Bubble Button

Automatically inflates Bubbles® and Deco Bubbles® to "wrinkle-free" seams and all size foils to the correct pressure and size.

Foil Balloons: Slide the outlet into the foil balloon and push to inflate.

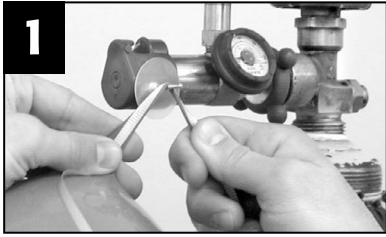
Bubble Balloons: Slide the Bubble balloon onto the outlet and push down to begin inflating. Press and hold the gold Bubble button to inflate to "wrinkle-free" seams.

Item # 36521



Balloon Tying Discs

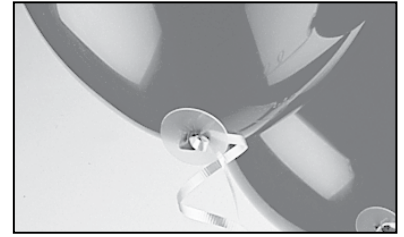
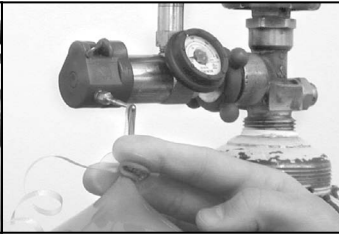
For latex balloons up to 16".



1 Place disc on tying post. Stretch the neck of the balloon and ribbon over the tying post.

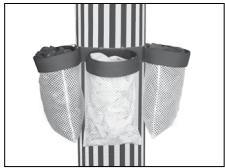


2 Hold stretched balloon and ribbon with one hand. Place your fingers behind the tying disc and slide the disc 1" over the neck of the balloon and ribbon.



Remove tied balloon from post.

Related Products for the 10ft. Extension Hose Inflator



Balloon Caddy

Conwin's Balloon Caddy provides an instant workstation around the cylinder. Three-Pocket Caddy holds balloons, weights, ribbon, discs, etc.

Item # 32021



Clip-On Quick Cutter

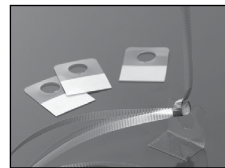
The Clip-On Quick Cutter is a great time saver to quickly cut ribbons, arch line, and balloons. Safety guard that conceals the steel blade, making it a safe and efficient cutter. Item # 36940



Grip Strips

The strips grip the ribbon while you are on the job or at the shop. The adhesive backing allows for convenient placement on any clean surface.

Item # 32070

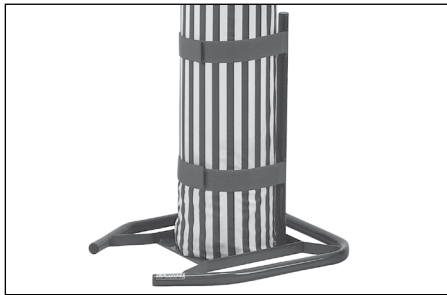


Grip Tabs

Ideal for centerpieces, simply stick the Grip-Tabs to any clean surface and tie on balloons.

Item # 32081

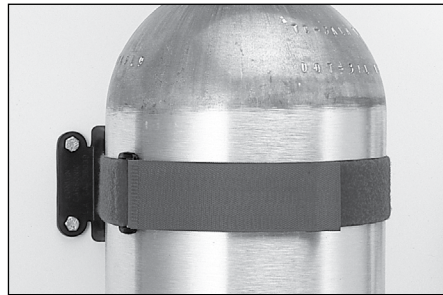
CONWIN CYLINDER SAFETY PRODUCTS: To insure worker safety, cylinders should always be secured in the work area and during transportation. Conwin's Cylinder Safety Stand and Cylinder Safety Bracket secure all size cylinders.



Cylinder Safety Stand

The cylinder safety stand features two velcro® safety belts to support all size cylinders. A must for worker safety in the shop and on the job. Durable steel construction.

Item # 30120



Cylinder Wall Bracket

An economical solution in any work area. Mounts to the wall and secures any cylinder with a Velcro® safety belt.

Item # 30100



Cylinder Hand Truck

The new Cylinder Hand Truck is easy to assemble and offers the flexibility to upgrade to a 4-Wheel model with the purchase of a 2-Wheel Add-On Carriage at any time!

Cylinder Hand Truck • Item # 49822
2-Wheel Add-On Carriage • Item # 49823

Service & Warranty

For assistance with service & repair issues or for warranty information, please visit ConwinOnline.com/Support, or call 1-(818) 246-9233



CONWIN

4510 Sperry Street
Los Angeles, CA 90039

Online Projects,
Designs,
Articles, Galleries
...and more!

ConwinOnline.com



Scan with your smartphone
to visit ConwinOnline.com